

# Southborough Trails Committee



## Peninsula Trail Next Steps: Bridging the Gap



**Community Preservation Funding Application**  
**August 31, 2023**  
*(v4 updated January 2024)*

For CPC use only: Date Received:

**Town of Southborough Community Preservation Committee**

17 Common Street; Southborough, MA 01746

**COMMUNITY PRESERVATION ACT (CPA) APPLICATION FOR 2024 ANNUAL TOWN MEETING**

**APPLICATION Due August 31, 2023**

**Name of Proposal:** [Peninsula Trail Next Steps: Bridging the Gap](#)

**Total CPA funds requested:** [\\$211,232.00](#)

Date of Submission: [August 31, 2023 \(revised January 1, 2024\)](#)

Name of Applicant: [Southborough Trails Committee \(STC\)](#)

Contact Person: [Kathryn McKee, STC Chair](#)

Mailing Address: [17 Common Street, Southborough, MA 01772](#)

Daytime Phone Number: [508-479-0971](#)

Email Address: [kmckee@southboroughma.com](mailto:kmckee@southboroughma.com)

CPA Funding Requested: [\\$211,232.00](#)

Sponsoring Organization and/or Affiliations: [n/a](#)

Have you watched the CPC’s Annual Public Forum recording on June 27, 2023 starting at 40 minutes and 17 seconds into the presentation? If this is a housing application, you need to watch the presentation by Shelly Goehring, Senior Program Manager at the Massachusetts Housing Partnership (MHP) that begins at the start of the CPC’s Annual Public Forum. Link: <https://youtu.be/MIhQprxPsyY>

[YES](#)

CPA Category (Check ALL that apply - refer to Coalition Chart on Last Page)

Open Space

Historic Preservation

Recreation

Community Housing

Please submit the following application by August 31, 2023; for consideration at Southborough Annual Town Meeting in 2024. Please email your completed application to both: Benjamin Smith, CPC Chair at [bsmith@southboroughma.com](mailto:bsmith@southboroughma.com) and Frederica Gillespie, CPA Consultant at [fg.cpaconsulting@gmail.com](mailto:fg.cpaconsulting@gmail.com)

## PROJECT DESCRIPTION

In describing the project, please include answers to the following questions. Applications may be returned as incomplete if all relevant requested information is not provided. Include supporting materials and exhibits, as necessary.

1. Provide a Project Name (as it will appear on warrant article)
  - a. Peninsula Trail Next Steps: Bridging the Gap

### Overall Project Background:

The Southborough Trails Committee has been working for over six years to open a 1.9-mile nature trail that includes a .4 mile section of trail that meets accessibility criteria (“Peninsula Trail”). Opening this trail will help close the largest remaining gap in Southborough for two regional trail systems ([Boroughs Loop Trail \(BLT\)](#) and the [Aqueduct Trail](#)) and will intersect with a third, the [Bay Circuit Trail \(BCT\)](#). The accessible trail segment will be the first of its kind in this community. The overall project includes the installation of ADA parking, interpretative signage that will highlight the town’s history and help to create more awareness around the importance of protecting and managing watersheds, the reservoir, wildlife habitats, and preserving open space. It also includes installing an ADA compliant boardwalk and footbridge to reroute the trail off a dangerous section of road and to connect to the BCT.

This nature trail will provide unique opportunities to connect the surrounding communities and provide access to a partially paved and hard-packed woodland trail which will expand recreational opportunities to people of all ages and physical abilities.

### CPA Project Overview:

Specific to this application, STC is seeking additional funding to help cover project costs related to the installation of the boardwalk, footbridge, paving, striping, signage for the accessible parking spots, and other trail construction related tasks and permits related to Phase II of the overall project. The project costs include hiring a qualified contractor who will oversee and manage the purchase of the bridge and boardwalk and the buildout.

2. GOALS: What are the goals of the proposed project? Who will benefit and why? How will success be measured?

#### Project Goals:

- **Expand recreational resources and opportunities** for use by all ages and abilities
- **Enhance the accessibility features** of the trail
- **Educate trail visitors** using interpretative signs to highlight Southborough’s history, importance of protecting/managing watersheds, wildlife habitats, and preserving open space
- **Help to close a critical gap** for two regional trails: Boroughs Loop and the Aqueduct Trail

#### Who will benefit and why?

Southborough residents and the broader community are the intended beneficiaries.

The importance of having access to adequate open space in communities is well known. Communities that

offer open space can benefit economically by attracting more permanent residents as well as visitors. It is also well documented that physical activity enhances an individual's overall health and well-being. Trails create healthy recreational opportunities for the community and can help strengthen community engagement. The Peninsula Trail is unique in that it overlaps with an existing access road. It's roughly 10-12' wide and the first .4 miles is paved. The .4 mile section of the trail qualifies as an accessible route of travel meaning the running and cross slopes on this path are compliant with accessibility criteria. This accessible trail is the first of its kind in Southborough. This type of trail will expand access for individuals who need a more stable walking surface such as individuals with mobility or vision issues, parents of children with strollers, and seniors who may not be able to use the town's existing trails due to surface conditions.

Based on state voter registration data for Southborough, as of January 2022, there are over 1,300 residents over 65 years old (10% noted ambulatory difficulty and 3% are mobility impaired), over 1,800 residents under the age of 18 and over 300 households have children under the age of 5 years old. In addition, there are eight housing developments in Southborough with at least some over 55 units. South Meadows has 52 units of 55+ and is within walking distance to the proposed trail, as well as a few other neighborhoods. The Southborough Council on Aging noted that seniors over 60 are one of the fastest growing segments of our population. The town has a low-income population of about 8.7%. This trail segment will offer a low-cost, healthy outdoor recreation option for a diverse group of people.

Increasing access to outdoor natural resources is a safe way to make a positive impact in one's leisure activities and to improve social connections. Exercise and socialization will enhance one's physical, spiritual, and mental well-being. Trails are beneficial to the individual and to the community.

The installation of the elevated boardwalk and footbridge will reroute the trail off a dangerous section of state road which is currently the only path connecting the trail systems. The road has guardrails, no shoulder, and no sidewalks for safe crossing. This section of trail will provide a safer connection at the junction of three regional trail systems.

### **How will success be measured?**

Success will be measured by how often the trail is used and from solicited and unsolicited feedback of trail visitors.

The Committee has been increasing its community outreach and engagement through the active participation in local events (Heritage/Earth Day), coordinating guided nature walks and other programming, use of social media, and via our website for years. These activities have helped us raise awareness about Southborough trails and strengthen our relationships with residents and community members. As we continue to monitor the trails and engage with visitors, our conversations will help keep us aware of their experiences.

### **3. ELIGIBILITY: Define how the project meets CPA requirements (please refer to the Allowable Use Chart on page 5)**

This project meets four of the six CPA criteria for recreation projects outlined in the [Southborough Plan](#):

1. Support multiple recreation uses
2. Serve a significant number of residents
3. Expand the range of recreational opportunities available to Southborough residents of all ages and abilities
4. Jointly benefit the Open Space Preservation Commission, Conservation Commission and Recreation Commission initiatives

The project also meets the recreation goals to expand trail systems on conservation land and create partnerships and agreements with private landowners to promote passive recreation. Although this project is categorized as a recreation project, it also meets the Open Space goal (and criteria) listed in the plan to create trail linkages including new trails, walkways, and greenways. The project also overlaps with the Open Space criteria of providing opportunities for passive recreation and environmental education. The proposed trail is located next to the Sudbury Dam Historic District (Fayville Dam) which is listed in the U.S. National Register of Historic Places. The interpretive and historical signage will take Southborough trails to the next level. Trail visitors will learn about important historical information and what it means to protect watersheds and wildlife habitat while enjoying the outdoors.

4. HISTORIC PROJECTS: If this is a historic project make sure it complies with the attached Flow Chart, last page  
N/A
5. COMMUNITY NEED: Why is this project needed? Does it address needs identified in existing Town plans?

Walkability, trails, and access to open space have been identified as some of the highest priorities when Southborough residents were asked to provide feedback via public forums or surveys since before the 2008 Master Plan was completed.

The following common themes appear in all the responses:

- Increase the walkability of Southborough through trails and walking paths
- Enhance recreational opportunities for all ages
- Improve connectivity to regional trail networks and surrounding communities

These recurring themes are noted in the [2008 Master Plan](#), the [2021 Master Plan](#), the [2017 EDC survey](#) and [2018 technical assistance session](#), and the 2016 public forums and open space and recreation survey results that were incorporated into the 2019 Open Space and Recreation Plan Update.

The following rankings and comments have been extracted from the Master Plan Survey conducted in the spring of 2020:

**Ranked Extremely Important:**

- Strategically enhance connectivity within Southborough and with surrounding communities, (sidewalks, Trails, pedestrian crossings)
- Develop recreation facilities and activities to meet a broad range of ages and interests

**Ranked Important:**

- Enhance connectivity of open space with Southborough and with neighboring communities
- Natural resources use

**Other Objectives List by Respondents:**

- *“Connectivity between different areas of town, walking/biking options to get downtown...”*
- *“Connect trails to other loops and towns”*
- *“Some trails have become overcrowded. Lack of parking areas”*
- *“Leverage the town’s historic assets and historic district”*
- *“Southborough is the gap in the regional trails loop – this is embarrassing”*

- *“Trails, walking and biking connectivity would be good for the environment, public health and sense of community”*

This project will help Southborough reach the following goals listed in the 2021 Master Plan:

- OS-2.0 Expand connectivity of and access to existing open space via the trail system without compromising public safety, wildlife activity or causing adverse environmental impact
- OS-2.2 Build and maintain trails and parking areas; examples would include a paved walking track around Mooney Field, a walking trail around the golf course during appropriate times. Investigate dog walking and running needs
- OS-2.3 Continue to establish connections to regional trails, e.g., the Boroughs Loop, the Aqueduct Trail and the Boston-Worcester Airline trail (BWALT)
- OS-2.5 Establish ADA compliant or more accessible trails and parking, where appropriate

## 6. COMMUNITY SUPPORT: What is the nature and level of support and/ or opposition for this project?

STC has conducted extensive outreach to the community to gain support for this project.

In 2020, STC initiated an outreach campaign to collect signatures to demonstrate community support for this project to encourage the Massachusetts Department of Conservation and Recreation to move forward with the update of the Sudbury Public Access Plan that was placed on hold due to the pandemic in early 2020. An update to the public access plan to add this parcel was needed before we could move forward with the project and secure additional funding. STC collected over 1600 signatures from the community in support of opening this parcel to the public and reached out to 18 unique outreach channels to request support from the community. In addition to these signatures, eight (8) letters of support from Marlborough, Southborough (Board of Selectmen), Westborough Community Land Trust, Sudbury Valley Trustees, Northborough Conservation Commission/Open Space/Trails Committed (3 letters), and MAPC were collected to further demonstrate the community’s interest in the project and the need to move forward with the public access plan. The public access plan was executed in June of 2022. Here are a few key community comments collected during the outreach process:

- *"More trails in Southborough would be wonderful, and being part of a bigger network is a good thing for the greater community."*
- *"I love this trail and would appreciate not having to run on the roads in between segments. Safer for the drivers as well!"*
- *"This initiative is an investment in the future"*
- *"Trail connectivity helps people more easily explore and enjoy open spaces. This is an important missing link to open up for public access."*
- *"...Southborough is not a pedestrian friendly town due in part to the physical barrier the Sudbury Reservoir creates for crossings combined with a lack of sidewalks, and 3 highways bisecting the town. The Sudbury Reservoir has made crossings very difficult particularly in Fayville where this trail section is proposed, this is a critical trail segment to allow more trail access. While it doesn't solve the causeway crossing problem, it is an important step. One would hope that MWRA/DCR would be willing to work with a town that is impacted by the constraints created by reservoir, and help residents have access to trails on your property. In addition to the impact to Southborough is the fact that this trail is a state asset; connecting not only to the regional Boroughs trail but also to the over"*

In addition, STC secured 22 letters of support to support our 2022 MassTrails grant application for Phase I of this project from the following organizations.

**LANDOWNERS**

- DCR
- MWRA

**STATE LEGISLATORS**

- Sen. Eldridge/Rep.Dykema

**REGIONAL PLANNING AGENCY**

- MAPC

**LOCAL BUSINESS**

- Sanofi

**SOUTHBOROUGH**

- Select Board
- ADA Coordinator
- Recreation Commission
- Conservation Commission
- Historical Commission
- Open Space Preservation Commission
- Economic Development Committee
- Council on Aging
- Senior Center Trailblazers
- DPW

**COMMUNITY**

- Southborough Open Land Foundation
- Marlborough Conservation Commission/Trails Committee
- Northborough Trails Committee
- Westborough Community Land Trust
- Sudbury Valley Trustees
- Framingham Conservation Commission
- Appalachian Mountain Club/Bay Circuit Alliance

7. BUDGET: What is the total budget for the project and how will CPA funds be spent? All items of expenditure must be clearly identified, and back-up documentation provided. Distinguish between hard and soft costs. Depending on your project, more than one estimate may be required (NOTE: CPA funds may NOT be used for maintenance). Attach a two to five-year budget, if appropriate.

<b>Peninsula Trail Next Steps: Bridging the Gap</b>	
Fiberglass Boardwalk Kit, ~70'x6'	\$ 61,900.00
Fiberglass Footbridge Kit, ~65'x6'	\$ 90,780.00
General Contractor Fees (Est. at \$150/hr; 60 hrs)	\$ 9,000.00
ADA Paving, Striping, Signage	\$ 22,000.00
<b>Project Subtotal</b>	<b>\$ 183,680.00</b>
Project Contingency 15%	\$ 27,552.00
<b>Project Total</b>	<b>\$ 211,232.00</b>

See [Appendix A](#) for Boardwalk quote, [Appendix B](#) for Footbridge quote, [Appendix C](#) for ADA Paving

8. FUNDING: What additional funding sources are available, committed or under consideration? Include commitment letters, in kind donations and volunteer hours, and describe any other attempts to secure funding for this project.

STC has secured funding for Phase I of the Peninsula Trail project (signage, fencing, ADA parking). The project components included in this application are part of the expanded scope, Phase II. ARPA funding was secured to cover some of the project components in Phase II but not all. For example, the paving of the ADA parking was not included in the original Phase II scope. The need for an upgraded surface was recently uncovered during an ADA consultant site visit (August 2023). The paving is required to fully meet the accessibility requirements.

The bridge and boardwalk project components in this application were included in STC’s ARPA funding request, along with the engineering services required for installation. However, the initial funding requests and budget for the engineering services were not sufficient to cover anticipated costs. STC expects to reallocate existing ARPA funds to cover the engineering costs to develop site work construction drawings to incorporate into a project bid seeking a qualified general contractor to oversee the project that we expect to get posted this year. If approved, the funds requested in this application will be used to fund the remainder of the Phase II project in 2024. The timeline may extend beyond 2024.

9. **TIMELINE:** What is the schedule for project implementation, including a timeline for all critical elements? This should include the timeline for expenditures, receipt of other funds and/or other revenues, if any.

Project Timeline	Mar-24	Apr-24	May-24	Jun-24	Jul-24	Aug-24	Sep-24	Oct-24	Nov-24	Dec-24	Jan-Dec 2025	Jan-Dec 2026
Annual Town Meeting 2024; vote on application.												
Funds available (if project is approved)												
Project commences												
STC expects the project to be completed by December 2024												

10. **IMPLEMENTATION:** Who will be responsible for implementing the project? Who will the project manager be? What relevant experience does the proposed project manager have? Who else will be involved in project implementation and what arrangements have been made with them?

The Trails Committee will be issuing a bid to hire a qualified contractor to oversee and manage the purchase and buildout of the bridge and boardwalk. Kathryn McKee (STC Chair) and the Committee members will coordinate with the contractor to ensure project components are completed on time and within budget. Tim Davis, Recreation Director, and the Recreation Commission are currently serving in an advisory capacity.

The Trails Committee has successfully overseen the execution of the fence/gate installation and the ADA parking from the Phase I project in early 2023 and other trails related projects throughout the year.

The following highlights the relevant experience of the Project Manager:

- Member of the Trails Committee since 2017, Chair since 2018
- Led the reconstruction of the Bay Circuit/Boroughs Loop Trail Connector Trail in 2020
- Led the construction of the Aqueduct Trail extension in 2021/2022
- Organized BCT Volunteer work crew for technical trail buildout; worked alongside crew to learn additional trail building skills
- Coordinated volunteer trail maintenance parties and organized trail programming since 2017.
- Attended DCR Trails Conference and hands-on trail building/maintenance workshop (2017, 2019, 2022)
- Attended International Trails Symposium and hands-on trail building workshop (2019)
- Attended Leominster Trail Stewards trail maintenance workshop (2020)
- Additional volunteer experience: currently serving as a member of the Stewardship and Master Plan Implementation Committees
- Business experience: Over 25 years in operations and administration overseeing, planning and monitoring daily business activities including financial, IT, HR operations, contract support, and vendor management. Currently serving as the Senior Director, Operations for a local clean energy consulting firm and as a member of the Management team for the past 10 years.



11. MAINTENANCE: If ongoing maintenance is required, who will be responsible and how will it be funded? Please attach a detailed five-year budget.

The Committee will be responsible for identifying maintenance issues. Any future maintenance requirements will be funded through STC's budget, grants, and/or other available funding sources.

12. SUMMARY: Brief description of the project to be printed as project summary in the warrant article.

STC is seeking additional funding to help cover project costs related to the installation of the boardwalk, footbridge and the related engineering services, paving, striping, signage for the accessible parking spots, and other trail construction related tasks and permits related to Phase II of the Peninsula Trail project.

ADDITIONAL INFORMATION: Please provide the following additional information, if applicable

1. **FURTHER DOCUMENTATION:** Documentation that you have control over the site, such as a Purchase and Sale Agreement, option to deed. (Letters of support from relevant town entities)

The following letters of support are attached ([See Attachment D](#)):

- Recreation Commission
- Southborough Public Accessibility Committee
- Southborough Council on Aging

2. **FEASIBILITY REPORTS:** Any feasibility reports, renderings or other relevant studies and material.

Please see [Attachment E](#), Guidance on Proposed Peninsula Accessible Trail and Related Amenities Report, Prepared by James Mazik Consulting Services and the Center for Living & Working, Inc. August 2023. This report documents the accessible parking upgrades we are requesting funding for in this application.

3. **ZONING COMPLIANCE:** Evidence that the project does not violate any zoning by-laws or any other laws or regulations, including environmental, and/or plans to obtain necessary approvals.

STC has an existing order of conditions from Phase I. STC has confirmed with the Conservation Agent, Melissa Danza, that the order of conditions will need to be amended to include the accessible paving. STC will appear before the Conservation Commission to request the amendment. DCR and MWRA have agreed to paving the parking spots. STC has an active 8(m) permit with MWRA for the parcel where the boardwalk and bridge are being proposed. The organization is supportive of this project.

STC will also be working with the Conservation Commission in Southborough and Framingham to ensure all local and state bylaws are followed for the boardwalk and bridge installation, including all required permits.

4. If a non-town government entity is the applicant, please list contact information for all relevant contacts for the project and if a non-profit list contact information of the board members. N/A

5. OTHER INFORMATION: Any additional information that might benefit the CPC in their consideration of this project.

[Click here for project location and pictures](#)

A representative from the project will be required to present the project to the CPC.

Applicant requirements after CPC recommends project for Town Meeting:

- The project applicant is required to sign a Memorandum of Understanding (MOU) with the CPC documenting all the agreements made during the application process.
- To assist with fielding questions concerning the project, a Project Representative shall attend the Board of Selectmen and Advisory Committee meetings with the CPC when the CPC warrant articles are reviewed.
- A Project Representative shall attend Town Meeting to answer questions. Any Project Presentation to be reviewed by CPC.
- All Town Meeting approved projects must submit a project schedule and proposed payment timeline. That schedule will be used to determine project completion deadline. The MOU must be signed prior to start of project.
- All Town Meeting approved projects shall present progress reports at 6- month intervals along with written reports to the CPC.
- All Town Meeting approved projects are required to include permanent signage stating that Southborough CPA provided funding for the project (wording shall be reviewed with the CPC prior to completion of the project).
- All project publicity shall include a statement that the Southborough Community Preservation Act provided funding for the project.

The chart below demonstrates the allowable uses of CPA funds in each of the CPA project categories: open space, recreation, housing, and historic preservation. This chart is critical for determining whether a proposed project is eligible for CPA funding. Projects are only eligible

for CPA funding if they fit in a “Yes” box below.

All Historic Preservation projects need to meet with the Southborough Historical Commission to determine their historical significance. See flow chart included with this application.

**Is Your Project Allowable?**

The chart below demonstrates the allowable uses of CPA funds in each of the CPA project categories: open space, recreation, housing, and historic preservation. This chart is critical for determining whether a proposed project is eligible for CPA funding

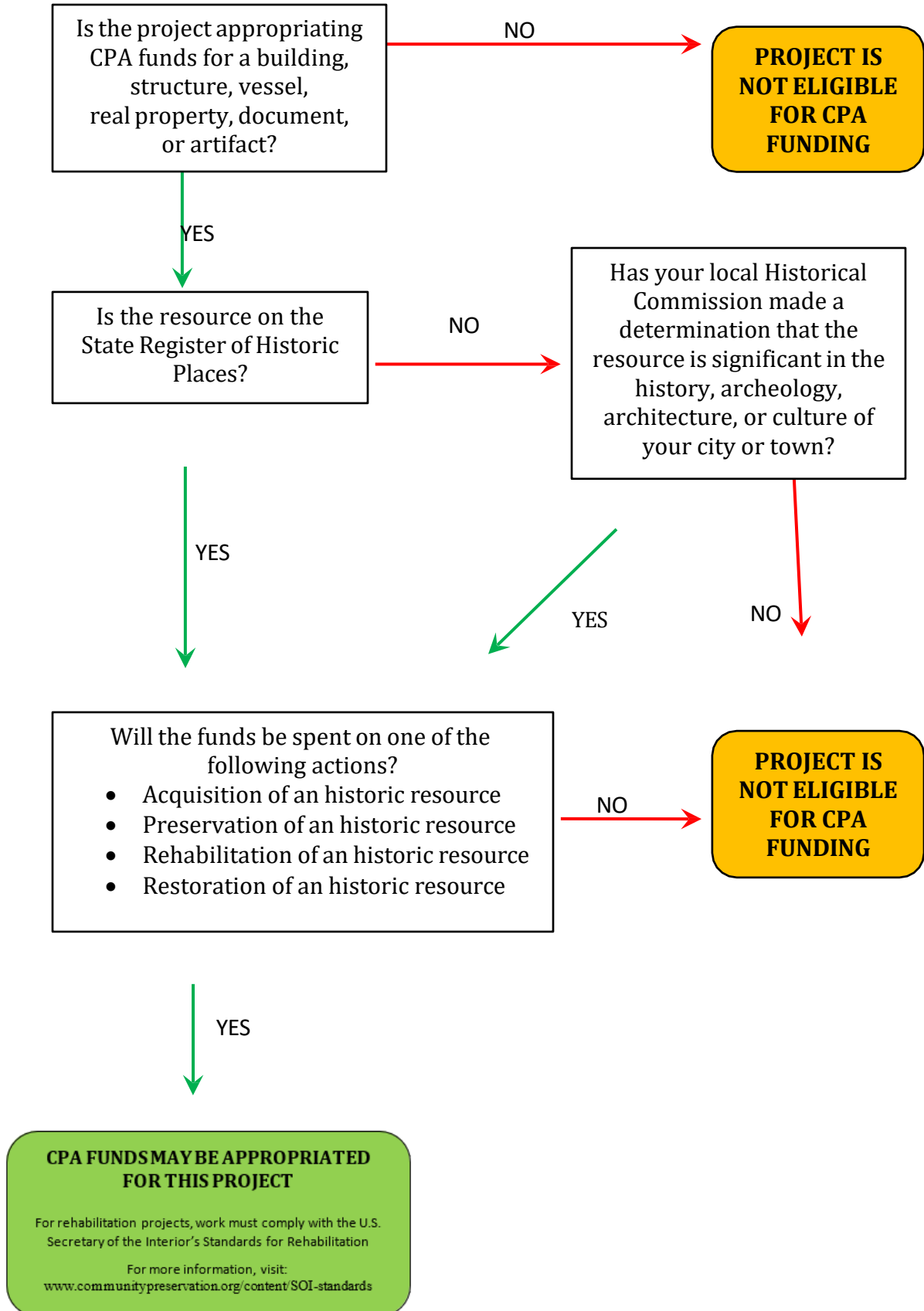
**COMMUNITY PRESERVATION FUND ALLOWABLE SPENDING PURPOSES**

	<b>Open Space</b>	<b>Historic</b>	<b>Recreation</b>	<b>Housing</b>
<b>Acquire</b>	<b>Yes</b>	<b>Yes</b>	<b>Yes</b>	<b>Yes</b>
<b>Create</b>	<b>Yes</b>	<b>No</b>	<b>Yes</b>	<b>Yes</b>
<b>Preserve</b>	<b>Yes</b>	<b>Yes</b>	<b>Yes</b>	<b>Yes</b>
<b>Support</b>	<b>No</b>	<b>No</b>	<b>No</b>	<b>Yes</b>
<b>Rehabilitate and/or Restore</b>	<b>Yes, if acquired or created with CPA funds</b>	<b>Yes</b>	<b>Yes (new 7/8/2012)</b>	<b>Yes, if acquired or created with CPA funds</b>

NOTE: The 7/8/2012 Legislation prohibits use of CPA funds to pay for Artificial Turf Fields.

Historical Projects need to review the historical chart below

### Qualifying Historic Projects for CPA Funding



Attachment A: Boardwalk quote

# Appendix A, Boardwalk



## Fiberglass Bridges and Boardwalks

214 Industrial Lane, Alum Bank, PA 15521  
814.839.4186 · Fax: 814.839.4276 · Toll free 888.CPI.PULL



Quote Date: 1/18/2022  
QUOTE #: 011822.3

Revised Dec 2023

Town of Southborough MA, 7x 10'x6' BW

**RE: Fiberglass Boardwalk Estimate, 10'x6'x3" Curb Mount**

Dick,

Thank you for your inquiry. I am pleased to submit the estimate for your fiberglass access solutions project. Please contact me if you have any questions or need further assistance.

Sincerely,

Brandon Weyant

E.T. Techtonics  
A Creative Pultrusions, Inc. Product Line

Office: (814) 839-4186 Ext. 265  
Mobile: (814) 289-1476  
[bweyant@pultrude.com](mailto:bweyant@pultrude.com)

Design Approach: International Building Code (IBC)  
Pedestrian Live Load: 90 PSF  
Snow Load: 50 PSF  
Wind Load: 35 PSF  
Vehicle Load: Pedestrian Only

(7) Fiberglass 10'-0" long x 6'-0" wide boardwalks	\$ 26,000.00	<b>\$35,000 (Revised per email 12/12/23)</b>
PE stamped drawings & calculations	\$ 2,400.00	<b>\$2,400 (no change)</b>
Shipping Un-Assembled to Southborough , Massachusetts	\$ 2,200.00	<b>\$2,200 (no change)</b>
Adders:	Total \$ 30,600.00*	
FRP Molded Deck GRT062 (1.5"x1.5"x1.5", 10'x3' 14x Panels)	\$ 12,800.00	<b>\$15,800 (Revised) email 12/12/23)</b>
22% Resin Surcharge Fee	\$ 1,500.00	<b>\$1,500 (assume no change)</b>

\*The total does not include any Federal, State, or Local taxes.

Estimated Bridge Weight (Installed): 357 lbs per boardwalk (Material + Hardware)

The bridge will include the following:

- Stock Color: Slate Gray
- Standard A307 hot-dipped galvanized steel hardware kit
- Decking Supplied By Customer w/ Deck Screws
- 3" Curb Mount

Additional hardware:

Marine Hardware: \$4,000 Clips: \$1,000

**Total: \$61,900**

### Liability Statement

The calculations and recommendations set forth in this document are gratuitous in nature and are believed to be accurate. Creative Pultrusions, Inc., nor its employees assume any obligation or liability that may arise as a result of the use of the information placed forth in this document.

### TERMS & CONDITIONS

Delivery: Ship complete 10 to 12 weeks ARO based on current backlog, subject to change at time of order, from the receipt of the Purchase Order, down payment payment (if required), and the signed customer approval drawings.

Notes:

- Payment terms: Payment terms are based on approval of credit information supplied to CPI.
- A 3.5% service fee will apply for all payments made by Visa, Discover, and MasterCard.
- Due to the current supply chain crisis, this quotation reflects "spot pricing", subject to review/confirmation at time of orde.
- Parts quoted are based on standard properties and tolerances as outlined in the Creative Pultrusion, Inc. Design Manual and Bridge Submittal Drawings at the time of order.
- Creative Pultrusions, Inc. shall warrant the structural integrity of all FRP materials, design, and workmanship for 15 years from the time of deliver.

IMPORTANT NOTICE TO CUSTOMER: This document is not an acceptance of any prior offer made by Customer. Rather, this document is an offer, acceptance of which is limited and subject to the terms of Seller's written sale agreement with Customer, or, if none, then Seller's Terms of Sale which are incorporated in full into this document and can be found [below/attached/on the reverse side hereof] and/or [Seller's website at [www.creativepultrusions.com](http://www.creativepultrusions.com)]. By accepting any performance by Seller, Customer agrees to be bound by the terms of this document and Seller's sale agreement with Customer, or, if none, then Seller's Terms of Sale. Contact Seller immediately if you do not have or cannot access Seller's Terms of Sale. If this document is a written confirmation of a verbal order by Customer, Customer agrees that the terms of this document control. Different or additional terms proposed by Customer are expressly rejected and shall not become a part of the contract between Customer and Seller.

## Appendix A, Boardwalk Quote Additional Price Details

**From:** [Brandon Weyant](#)  
**To:** [Kathryn Mckee](#)  
**Subject:** RE: Updated Quote for Bridge & Boardwalk RE: Time Sensitive Request -  
**Date:** Tuesday, December 12, 2023 11:45:02 AM  
**Attachments:** [image001.png](#)  
[image003.png](#)  
[Quote 121223 \(Town of Southborough MA 65"x6", Buy America, Kathryn Mckee\).pdf](#)  
[Quote 121223.1 \(Town of Southborough MA 65"x6", Kathryn Mckee\).pdf](#)

---

[EXTERNAL]

Kathryn,

I am attaching to this email the updated pricing for the bridge for you to look at. I have two quotes, including one for a buy America option that will utilize domestic bolts and another price for the bridge using imported bolts. Since this was last quoted, I updated our spreadsheet to allow me to price for American-made bolts. When we first spoke, I didn't have a good enough grasp on how much additional costs the American-made bolts would add. For example, on this project, using American-made bolts almost doubles our total costs for the full kit. I had Buy America jobs that we won this year, where the price increase caused by using American-made hardware added a larger cost to the total scope of the project which was unexpected. Because of this were we able to get expectations on all the projects to use imported bolts. There are some expectations that we can take as a fiberglass manufacturer as well, that might be able to be used on this project. That is why I included two budget quotes for you, so you can see the difference in costs between the two.

With regards to the boardwalk, right now the estimator for that is being revamped, and I don't have the ability to use it to give you a better budget idea right now. I explored what was in the design and was able to determine that the cost per LF of the boardwalk would be close to \$500 a linear foot. Making a 10' section around \$5,000 and 7x total sections at around \$35K. Now this does not include any American-made hardware in that budget. If you want that price, I would double the LF cost that I provided to you. The pricing above also doesn't include the decking (which will be a similar cost to the decking on the bridge quote), shipping, or engineering work, which will add around the same amount as was quoted previously (our shipping and engineering costs hasn't changed, only the decking which will run about \$2k-\$3k more).

I hope this is helpful for you. If you need any additional explanation, please feel free to call me.

Best,

**Brandon Weyant**  
Outside Sales Representative



Creative Pultrusions  
214 Industrial Lane, Alum Bank, PA 15521  
814.839.4186 Ext. 265 | Mobile: 814-289-1476

Attachment B: Footbridge quote





# Fiberglass Bridges and Boardwalks

214 Industrial Lane, Alum Bank, PA 15521  
814.839.4186 · Fax: 814.839.4276 · Toll free 888.CPI.PULL



12/12/2023

Budget QUOTE # : 121223.1

Town of Southborough MA 65'x6'

Kathryn,

Thank you for your inquiry. I am pleased to submit the estimate for your fiberglass access solutions project. Please contact me if you have any questions or need further assistance.

Sincerely,

Brandon Weyant

Design Approach: International Building Code (IBC)
Pedestrian Live Load: 90.0 PSF
Snow Load: 40.0 PSF
Wind Load: 35.0 PSF

E.T. Techtonics  
A Creative Pultrusions, Inc. Product Line

Office: (814) 839-4186 Ext. 265

Mobile: (814) 289-1476

bweyant@pultrude.com

(1) Fiberglass 65'-0" long x 6'-0" wide bridge	\$ 66,730.00
PE stamped drawings & calculations	\$ 2,600.00
Shipping Un-Assembled to Southborough , Massachusetts	\$ 2,200.00
FRP Decking: GRT062 Molded Decking Panel	\$ 15,450.00
<b>Total</b>	<b>\$ 86,980.00*</b>

Jan 2024: Include additional cost for diamond pin footings and other hardware related costs not included on this quote:

Diamond pin footings: \$1,800  
Other related hardware: \$2,000

**Total Cost: \$90,780**

\*The total does not include any Federal, State, or Local taxes.

Notice: Shipping cost is an estimate and subject to change at time of order

Estimated Bridge Weight (Installed): 7,075 lbs (Material + Hardware)

The bridge will include the following:

- 1500 Series: Non-fire retardant
- Fiberglass Support Trusses w/ X-Bracing
- 54" high hand-railings
- Straight ends
- Standard top cap with solid-color paint coating
- Safety mid-rails (per ADA specifications, 3-3/4" maximum spacing)
- Standard A307 hot-dipped galvanized steel hardware kit
- Standard Color: Olive Green
- Standard dead load camber design
- **Decking Supplied By Customer**

### Liability Statement

The calculations and recommendations set forth in this document are gratuitous in nature and are believed to be accurate. Creative Pultrusions, Inc., nor its employees assume any obligation or liability that may arise as a result of the use of the information placed forth in this document.

### TERMS & CONDITIONS

**Delivery: Order will be processed once the following items have been received by CPI; PO submittal, downpayment, approval of engineered sealed or non-sealed drawings. Lead time is 10-14 weeks upon order being processed. Delivery is subject to change based on the current project pipeline.**

- Payment terms: Payment terms are based on approval of credit information supplied to Creative Pultrusions, Inc.
- A 3.5% service fee will apply for all payments made by Visa, Discover, and MasterCard.
- Orders \$750k or greater and/or delivery window greater than 4 months are subject to progress payments based on final accounting review and approval.
- Due to the current supply chain crisis, this quotation reflects "spot pricing" only, subject to review/confirmation at time of order.
- Parts quoted are based on standard properties and tolerances as outlined in the Creative Pultrusion, Inc. Design Manual and Bridge Submittal Drawings at the time of order.
- Creative Pultrusions, Inc. shall warrant the structural integrity of all FRP materials, design, and workmanship for 15 years from the time of deliver.
- Delayed shipment for more than 30 days will be subject to additional charges, unless otherwise agreed upon.

IMPORTANT NOTICE TO CUSTOMER: This document is not an acceptance of any prior offer made by Customer. Rather, this document is an offer, acceptance of which is limited and subject to the terms of Seller's written sale agreement with Customer, or, if none, then Seller's Terms of Sale which are incorporated in full into this document and can be found [below/attached/on the reverse side hereof] and/or [Seller's website at www.creativepultrusions.com]. By accepting any performance by Seller, Customer agrees to be bound by the terms of this document and Seller's sale agreement with Customer, or, if none, then Seller's Terms of Sale. Contact Seller immediately if you do not have or cannot access Seller's Terms of Sale. If this document is a written confirmation of a verbal order by Customer, Customer agrees that the terms of this document control. Different or additional terms proposed by Customer are expressly rejected and shall not become a part of the contract between Customer and Seller.

Attachment C: ADA Parking Paving Quote

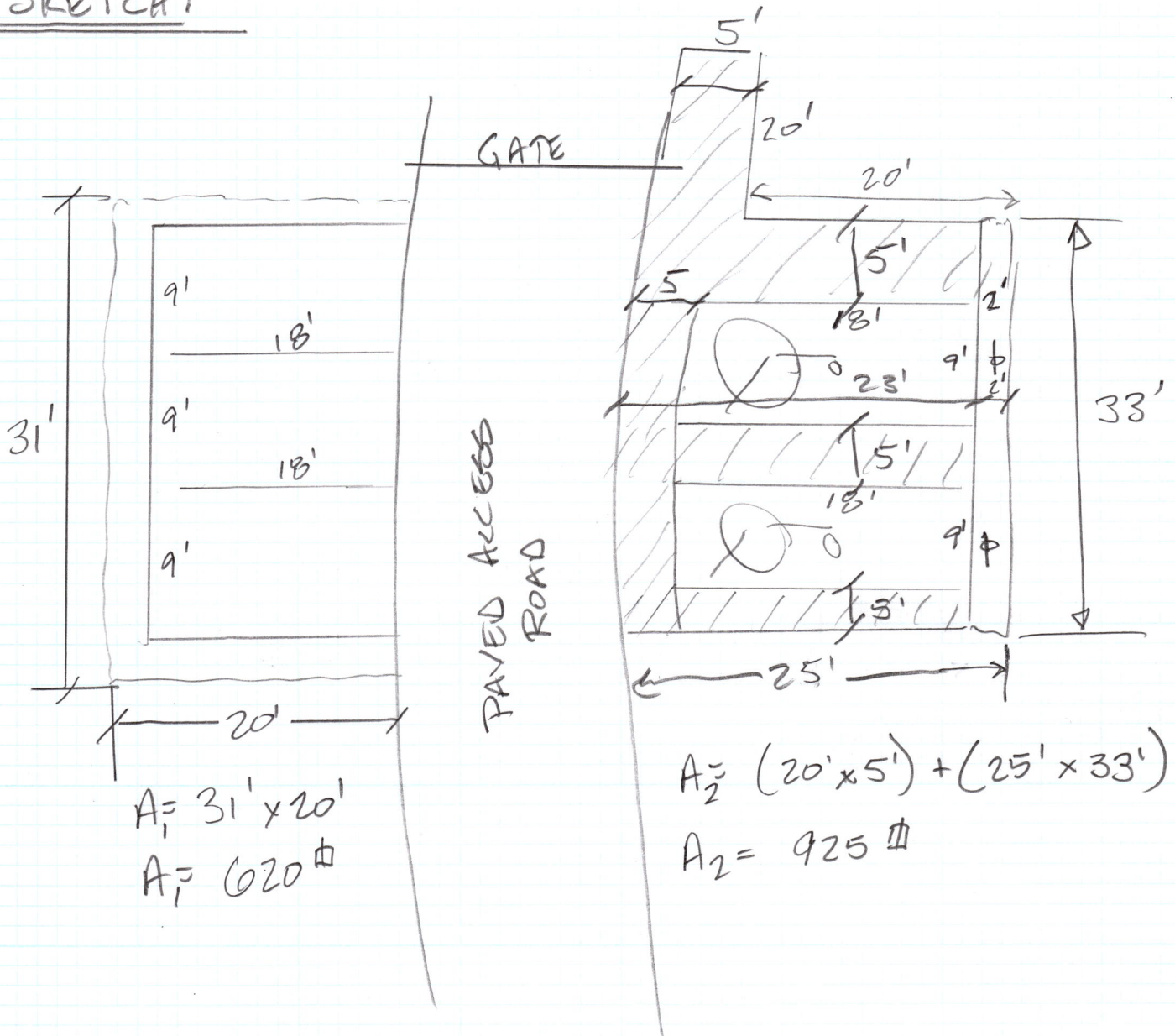
**Trail Parking Price Estimate**

Item	Description	MassDOT#	Unit Price		Quantity		Total
1	Erosion Control	767.8	\$ 9.17	/LF	100.00	LF	\$ 916.67
2	Unclassified Excavation	120.1	\$ 75.00	/CY	60.00	CY	\$ 4,500.00
3	Gravel Borrow	151.0	\$ 60.00	/CY	60.00	CY	\$ 3,600.00
4	Superpave Base Course (2")	450.41	\$ 158.00	/Ton	19.60	Tons	\$ 3,096.80
5	Superpave Top Course (1")	450.23	\$ 250.00	/Ton	9.63	Tons	\$ 2,408.00
6	6" ReflectORIZED White Line (Painted)	860.106	\$ 2.25	/LF	846.00	LF	\$ 1,903.50
7	Pavement Handicap Symbol	864.04	\$ 17.50	/SF	50.00	SF	\$ 875.00
8	Handicapped Signage	-	\$ 500.00	/EA	2.00	EA	\$ 1,000.00
9	Loam	751.0	\$ 86.00	/CY	20.00	CY	\$ 1,720.00
10	Seed	765.0	\$ 3.00	/SY	92.00	SY	\$ 276.00

**Total: \$ 20,295.97**

TASK: CALCULATE APPROX. COST TO CONSTRUCT PARKING SPACES AT INTERSECTION OF CENTRAL ST + BOSTON ROAD FOR TRAIL ACCESS.

SKETCH:



# Construction Project Estimator

- [About](#)
- [Projects](#)
- [Weighted Bid Prices](#)
- [Help](#)
- [Logout](#)
- [✉ Email Service Desk](#)

## Weighted Bid Prices

- [Criteria](#)
- [Chart](#)
- [Graph](#)
- [Book](#)

**767.8**

### Line Item Information

Item No: **767.8**  
 Item Description: **BALES OF HAY FOR EROSION CONTROL**  
 Measurement System: **English**  
 Type of Work:  
 Unit: **EA**  
 Unit price statistics computed for Period: **10/2022 - 10/2023**

### Unit price quantity breakouts

Min Quantity	Max Quantity	District	No. of Projects		No. of Bids		Unit Price Statistics			
							Minimum	Maximum	Mean	Median
<b>12.00 (EA)</b>	<b>12.00 (EA)</b>	All Districts	<u>1</u>	2	\$13.75	\$41.25	\$27.50	<b>\$27.50</b>		
		6	<u>1</u>	2	\$13.75	\$41.25	\$27.50	\$27.50		

**767.8**

# Construction Project Estimator

- About
- Projects
- Weighted Bid Prices
- Help
- Logout
- ✉ Email Service Desk

## Weighted Bid Prices

- Criteria
- Chart
- Graph
- Book

### 120.1

#### Line Item Information

Item No:	<b>120.1</b>
Item Description:	<b>UNCLASSIFIED EXCAVATION</b>
Measurement System:	<b>English</b>
Type of Work:	
Unit:	<b>CY</b>
Unit price statistics computed for Period:	<b>10/2022 - 10/2023</b>

#### Unit price quantity breakouts

Min Quantity	Max Quantity	District	Unit Price Statistics					
			No. of Projects	No. of Bids	Minimum	Maximum	Mean	Median
<b>6.00 (CY)</b>	<b>5274.00 (CY)</b>	All Districts	<a href="#">61</a>	152	\$41.75	\$125.25	\$77.93	\$75.00
		1	<a href="#">7</a>	18	\$50.00	\$150.00	\$92.39	\$95.00
		2	<a href="#">9</a>	19	\$55.00	\$165.00	\$99.57	\$100.00
		3	<a href="#">13</a>	41	\$37.50	\$112.50	\$67.80	\$60.00
		4	<a href="#">2</a>	6	\$60.00	\$180.00	\$123.88	\$122.50
		5	<a href="#">14</a>	34	\$32.50	\$97.50	\$62.47	\$60.00
		6	<a href="#">13</a>	27	\$39.00	\$117.00	\$70.40	\$70.00
<b>5274.00 (CY)</b>	<b>10542.00 (CY)</b>	All Districts	<a href="#">6</a>	25	\$20.00	\$60.00	\$41.18	\$42.00
		2	<a href="#">1</a>	4	\$8.50	\$25.50	\$17.75	\$17.00
		3	<a href="#">1</a>	8	\$20.50	\$61.50	\$40.25	\$41.00
		4	<a href="#">1</a>	2	\$28.07	\$84.20	\$56.13	\$56.13
		5	<a href="#">4</a>	14	\$22.00	\$66.00	\$45.88	\$48.00
<b>10542.00 (CY)</b>	<b>15810.00 (CY)</b>	All Districts	<a href="#">2</a>	10	\$22.50	\$67.50	\$43.90	\$45.00
		3	<a href="#">1</a>	8	\$21.25	\$63.75	\$41.63	\$42.50
		6	<a href="#">1</a>	3	\$30.50	\$91.50	\$59.10	\$61.00
<b>36882.00 (CY)</b>	<b>42150.00 (CY)</b>	All Districts	<a href="#">1</a>	2	\$38.25	\$114.75	\$76.50	\$76.50
		2	<a href="#">1</a>	2	\$38.25	\$114.75	\$76.50	\$76.50

### 120.1

# Construction Project Estimator

- About
- Projects
- Weighted Bid Prices
- Help
- Logout
- ✉ Email Service Desk

## Weighted Bid Prices

- Criteria
- Chart
- Graph
- Book

**151.**

### Line Item Information

Item No:	<b>151.</b>
Item Description:	<b>GRAVEL BORROW</b>
Measurement System:	<b>English</b>
Type of Work:	
Unit:	<b>CY</b>
Unit price statistics computed for Period:	<b>10/2022 - 10/2023</b>

### Unit price quantity breakouts

Min Quantity	Max Quantity	District			Unit Price Statistics			
					No. of Projects	No. of Bids	Minimum	Maximum
<b>5.00 (CY)</b>	<b>3455.63 (CY)</b>	All Districts	<a href="#">68</a>	234	\$32.50	\$97.50	\$61.21	<b>\$60.00</b>
		1	<a href="#">9</a>	38	\$37.50	\$112.50	\$69.61	\$70.00
		2	<a href="#">13</a>	52	\$30.50	\$91.50	\$54.99	\$53.50
		3	<a href="#">14</a>	55	\$27.50	\$82.50	\$52.05	\$53.00
		4	<a href="#">5</a>	14	\$36.25	\$108.75	\$72.90	\$69.00
		5	<a href="#">14</a>	51	\$31.25	\$93.75	\$62.22	\$64.00
		6	<a href="#">14</a>	30	\$30.00	\$90.00	\$60.54	\$60.00
<b>3455.63 (CY)</b>	<b>6906.25 (CY)</b>	All Districts	<a href="#">8</a>	25	\$22.50	\$67.50	\$46.49	\$48.00
		2	<a href="#">1</a>	7	\$24.00	\$72.00	\$50.86	\$48.00
		4	<a href="#">2</a>	4	\$17.50	\$52.50	\$37.17	\$35.00
		5	<a href="#">3</a>	6	\$19.50	\$58.50	\$41.75	\$44.50
		6	<a href="#">1</a>	4	\$22.50	\$67.50	\$42.00	\$42.50
<b>6906.25 (CY)</b>	<b>10356.88 (CY)</b>	All Districts	<a href="#">2</a>	11	\$24.00	\$72.00	\$43.27	\$45.00
		3	<a href="#">1</a>	8	\$21.25	\$63.75	\$41.13	\$42.50
		4	<a href="#">1</a>	4	\$27.50	\$82.50	\$55.69	\$53.50
<b>10356.88 (CY)</b>	<b>13807.50 (CY)</b>	All Districts	<a href="#">2</a>	12	\$27.50	\$82.50	\$58.33	\$55.50
		5	<a href="#">2</a>	12	\$27.50	\$82.50	\$58.33	\$55.50
<b>24159.38 (CY)</b>	<b>27610.00 (CY)</b>	All Districts	<a href="#">2</a>	5	\$18.75	\$56.25	\$36.60	\$35.00
		2	<a href="#">1</a>	2	\$27.50	\$82.50	\$55.00	\$55.00
		4	<a href="#">1</a>	3	\$16.25	\$48.75	\$29.33	\$30.00

**151.**

# Construction Project Estimator

- [About](#)
- [Projects](#)
- [Weighted Bid Prices](#)
- [Help](#)
- [Logout](#)
- [✉ Email Service Desk](#)

## Weighted Bid Prices

- [Criteria](#)
- [Chart](#)
- [Graph](#)
- [Book](#)

**450.41**

### Line Item Information

Item No: **450.41**  
 Item Description: **SUPERPAVE BASE COURSE - 25.0 (SBC - 25.0)**  
 Measurement System: **English**  
 Type of Work:  
 Unit: **TON**  
 Unit price statistics computed for Period: **10/2022 - 10/2023**

### Unit price quantity breakouts

Min Quantity	Max Quantity	District	No. of Projects	No. of Bids	Unit Price Statistics			
					Minimum	Maximum	Mean	Median
<b>1300.00 (TON)</b>	<b>1300.00 (TON)</b>	All Districts	<u>1</u>	7	\$79.00	\$237.00	\$162.29	<b>\$158.00</b>
		1	<u>1</u>	7	\$79.00	\$237.00	\$162.29	\$158.00

**450.41**



# Construction Project Estimator

- About
- Projects
- Weighted Bid Prices
- Help
- Logout
- ✉ Email Service Desk

## Weighted Bid Prices

- Criteria
- Chart
- Graph
- Book

**450.23**

### Line Item Information

Item No: **450.23**  
 Item Description: **SUPERPAVE SURFACE COURSE - 12.5 (SSC - 12.5)**  
 Measurement System: **English**  
 Type of Work:  
 Unit: **TON**  
 Unit price statistics computed for Period: **10/2022 - 10/2023**

### Unit price quantity breakouts

Min Quantity	Max Quantity	District	No. of Projects	No. of Bids	Unit Price Statistics			
					Minimum	Maximum	Mean	Median
<b>110.00 (TON)</b>	<b>808.75 (TON)</b>	All Districts	<u>6</u>	19	\$130.00	\$390.00	\$249.11	<b>\$250.00</b>
		1	<u>1</u>	4	\$142.50	\$427.50	\$280.00	\$285.00
		2	<u>2</u>	5	\$138.75	\$416.25	\$270.00	\$270.00
		5	<u>1</u>	3	\$214.00	\$642.00	\$426.00	\$428.00
		6	<u>2</u>	9	\$117.50	\$352.50	\$212.56	\$235.00
<b>808.75 (TON)</b>	<b>1507.50 (TON)</b>	All Districts	<u>2</u>	6	\$80.00	\$240.00	\$158.33	\$159.00
		5	<u>1</u>	5	\$82.00	\$246.00	\$161.00	\$160.00
		6	<u>1</u>	1	\$72.50	\$217.50	\$145.00	\$145.00
<b>1507.50 (TON)</b>	<b>2206.25 (TON)</b>	All Districts	<u>2</u>	13	\$74.00	\$222.00	\$146.46	\$148.00
		3	<u>1</u>	8	\$65.75	\$197.25	\$134.88	\$131.50
		6	<u>1</u>	5	\$84.50	\$253.50	\$165.00	\$169.00
<b>2206.25 (TON)</b>	<b>2905.00 (TON)</b>	All Districts	<u>4</u>	19	\$80.00	\$240.00	\$158.84	\$160.00
		2	<u>1</u>	7	\$71.00	\$213.00	\$147.14	\$142.00
		3	<u>1</u>	2	\$95.00	\$285.00	\$190.00	\$190.00
		4	<u>1</u>	5	\$77.50	\$232.50	\$154.40	\$155.00
		5	<u>1</u>	5	\$80.00	\$240.00	\$167.20	\$160.00
<b>2905.00 (TON)</b>	<b>3603.75 (TON)</b>	All Districts	<u>1</u>	9	\$70.50	\$211.50	\$138.56	\$141.00
		3	<u>1</u>	9	\$70.50	\$211.50	\$138.56	\$141.00
<b>3603.75 (TON)</b>	<b>4302.50 (TON)</b>	All Districts	<u>2</u>	12	\$67.75	\$203.25	\$138.75	\$135.50
		2	<u>1</u>	6	\$66.25	\$198.75	\$135.33	\$132.50
		6	<u>1</u>	6	\$69.75	\$209.25	\$142.17	\$139.50
<b>5001.25 (TON)</b>	<b>5700.00 (TON)</b>	All Districts	<u>1</u>	7	\$67.50	\$202.50	\$138.86	\$135.00
		1	<u>1</u>	7	\$67.50	\$202.50	\$138.86	\$135.00

**450.23**

# Construction Project Estimator

- About
- Projects
- Weighted Bid Prices
- Help
- Logout
- ✉ Email Service Desk

## Weighted Bid Prices

- Criteria
- Chart
- Graph
- Book

### 860.106

#### Line Item Information

Item No: **860.106**  
 Item Description: **6 INCH REFLECTORIZED WHITE LINE (PAINTED)**  
 Measurement System: **English**  
 Type of Work:  
 Unit: **FT**  
 Unit price statistics computed for Period: **10/2022 - 10/2023**

#### Unit price quantity breakouts

Min Quantity	Max Quantity	District	Unit Price Statistics					
			No. of Projects	No. of Bids	Minimum	Maximum	Mean	Median
<b>200.00 (FT)</b>	<b>75175.00 (FT)</b>	All Districts	<a href="#">7</a>	21	\$1.18	\$3.53	\$2.34	<b>\$2.25</b>
		1	<a href="#">3</a>	12	\$5.00	\$15.00	\$10.13	\$11.00
		2	<a href="#">1</a>	5	\$0.82	\$2.45	\$2.04	\$2.25
		3	<a href="#">3</a>	13	\$1.04	\$3.12	\$2.08	\$2.00
		4	<a href="#">1</a>	3	\$0.88	\$2.63	\$1.67	\$1.75
<b>525025.00 (FT)</b>	<b>600000.00 (FT)</b>	All Districts	<a href="#">1</a>	2	\$0.06	\$0.18	\$0.12	\$0.12
		2	<a href="#">1</a>	2	\$0.06	\$0.18	\$0.12	\$0.12

### 860.106

# Construction Project Estimator

- About
- Projects
- Weighted Bid Prices
- Help
- Logout
- ✉ Email Service Desk

## Weighted Bid Prices

- Criteria
- Chart
- Graph
- Book

**864.04**

### Line Item Information

Item No: **864.04**  
 Item Description: **PAVEMENT ARROWS AND LEGENDS REFLECTORIZED WHITE (THERMOPLASTIC)**  
 Measurement System: **English**  
 Type of Work:  
 Unit: **SF**  
 Unit price statistics computed for Period: **10/2022 - 10/2023**

### Unit price quantity breakouts

Min Quantity	Max Quantity	District	Unit Price Statistics					
			No. of Projects	No. of Bids	Minimum	Maximum	Mean	Median
<b>20.00 (SF)</b>	<b>10017.50 (SF)</b>	All Districts	<a href="#">46</a>	141	\$6.33	\$18.98	\$10.68	\$10.00
		1	<a href="#">2</a>	5	\$20.00	\$60.00	\$43.40	\$43.00
		2	<a href="#">9</a>	32	\$5.38	\$16.13	\$10.47	\$9.83
		3	<a href="#">6</a>	14	\$10.00	\$30.00	\$18.66	<b>\$17.50</b>
		4	<a href="#">10</a>	30	\$5.00	\$15.00	\$9.74	\$9.75
		5	<a href="#">8</a>	30	\$5.00	\$15.00	\$10.06	\$9.25
		6	<a href="#">8</a>	16	\$8.94	\$26.82	\$15.84	\$17.63
<b>70002.50 (SF)</b>	<b>80000.00 (SF)</b>	All Districts	<a href="#">1</a>	2	\$1.72	\$5.15	\$3.43	\$3.43
		5	<a href="#">1</a>	2	\$1.72	\$5.15	\$3.43	\$3.43

**864.04**

# Construction Project Estimator

- About
- Projects
- Weighted Bid Prices
- Help
- Logout
- ✉ Email Service Desk

## Weighted Bid Prices

- Criteria
- Chart
- Graph
- Book

751.

### Line Item Information

Item No:  
 Item Description:  
 Measurement System:  
 Type of Work:  
 Unit:  
 Unit price statistics computed for Period:

**751.**  
**LOAM FOR ROADSIDES**  
**English**  
  
**CY**  
**10/2022 - 10/2023**

### Unit price quantity breakouts

Min Quantity	Max Quantity	District	No. of Projects	No. of Bids	Unit Price Statistics			
					Minimum	Maximum	Mean	Median
<b>6.00 (CY)</b>	<b>592.75 (CY)</b>	All Districts	<a href="#">62</a>	210	\$42.50	\$127.50	\$86.02	<b>\$86.00</b>
		1	<a href="#">7</a>	27	\$50.00	\$150.00	\$105.00	\$100.00
		2	<a href="#">11</a>	53	\$40.00	\$120.00	\$80.12	\$80.00
		3	<a href="#">10</a>	38	\$43.75	\$131.25	\$84.32	\$85.00
		4	<a href="#">9</a>	24	\$37.25	\$111.75	\$74.84	\$74.50
		5	<a href="#">15</a>	43	\$44.25	\$132.75	\$85.83	\$90.00
		6	<a href="#">11</a>	29	\$42.50	\$127.50	\$88.14	\$85.00
<b>592.75 (CY)</b>	<b>1179.50 (CY)</b>	All Districts	<a href="#">6</a>	35	\$36.25	\$108.75	\$74.01	\$72.00
		1	<a href="#">2</a>	14	\$42.50	\$127.50	\$81.50	\$82.50
		3	<a href="#">1</a>	8	\$34.25	\$102.75	\$66.00	\$68.50
		4	<a href="#">1</a>	2	\$33.37	\$100.10	\$66.73	\$66.73
		5	<a href="#">2</a>	11	\$35.00	\$105.00	\$71.64	\$70.00
<b>1179.50 (CY)</b>	<b>1766.25 (CY)</b>	All Districts	<a href="#">1</a>	9	\$37.50	\$112.50	\$72.22	\$75.00
		3	<a href="#">1</a>	9	\$37.50	\$112.50	\$72.22	\$75.00
<b>1766.25 (CY)</b>	<b>2353.00 (CY)</b>	All Districts	<a href="#">2</a>	14	\$37.50	\$112.50	\$74.70	\$75.00
		3	<a href="#">1</a>	8	\$36.00	\$108.00	\$71.75	\$72.00
		5	<a href="#">1</a>	6	\$38.75	\$116.25	\$78.64	\$77.50
<b>2353.00 (CY)</b>	<b>2939.75 (CY)</b>	All Districts	<a href="#">2</a>	8	\$38.75	\$116.25	\$72.75	\$77.50
		2	<a href="#">1</a>	2	\$36.00	\$108.00	\$72.00	\$72.00
		4	<a href="#">1</a>	6	\$38.75	\$116.25	\$73.00	\$77.50
<b>2939.75 (CY)</b>	<b>3526.50 (CY)</b>	All Districts	<a href="#">2</a>	9	\$28.50	\$85.50	\$54.67	\$57.00
		6	<a href="#">2</a>	9	\$28.50	\$85.50	\$54.67	\$57.00
<b>4113.25 (CY)</b>	<b>4700.00 (CY)</b>	All Districts	<a href="#">2</a>	13	\$30.00	\$90.00	\$62.46	\$60.00
		4	<a href="#">1</a>	5	\$34.00	\$102.00	\$60.40	\$68.00
		5	<a href="#">1</a>	8	\$30.00	\$90.00	\$63.75	\$60.00

751.

# Construction Project Estimator

- About
- Projects
- Weighted Bid Prices
- Help
- Logout
- Email Service Desk

## Weighted Bid Prices

- Criteria
- Chart
- Graph
- Book

765.

### Line Item Information

Item No:	<b>765.</b>
Item Description:	<b>SEEDING</b>
Measurement System:	<b>English</b>
Type of Work:	
Unit:	<b>SY</b>
Unit price statistics computed for Period:	<b>10/2022 - 10/2023</b>

### Unit price quantity breakouts

Min Quantity	Max Quantity	District	No. of Projects	No. of Bids	Unit Price Statistics			
					Minimum	Maximum	Mean	Median
<b>27.00 (SY)</b>	<b>4273.63 (SY)</b>	All Districts	<a href="#">47</a>	151	\$1.63	\$4.88	\$3.01	\$3.00
		1	<a href="#">7</a>	16	\$4.00	\$12.00	\$8.81	\$10.00
		2	<a href="#">9</a>	29	\$1.13	\$3.38	\$2.22	\$2.00
		3	<a href="#">6</a>	29	\$1.50	\$4.50	\$2.70	\$3.00
		4	<a href="#">8</a>	20	\$1.83	\$5.48	\$3.45	\$3.00
		5	<a href="#">13</a>	52	\$1.75	\$5.25	\$3.40	\$3.33
		6	<a href="#">8</a>	22	\$1.50	\$4.50	\$3.12	\$3.00
<b>4273.63 (SY)</b>	<b>8520.25 (SY)</b>	All Districts	<a href="#">4</a>	19	\$0.75	\$2.25	\$1.27	\$1.00
		1	<a href="#">1</a>	5	\$0.50	\$1.50	\$1.02	\$1.00
		2	<a href="#">2</a>	7	\$0.63	\$1.88	\$1.12	\$1.00
		3	<a href="#">1</a>	6	\$1.13	\$3.38	\$2.34	\$2.50
		4	<a href="#">1</a>	2	\$1.62	\$4.85	\$3.23	\$3.23
		5	<a href="#">1</a>	1	\$2.15	\$6.45	\$4.30	\$4.30
<b>8520.25 (SY)</b>	<b>12766.88 (SY)</b>	All Districts	<a href="#">4</a>	16	\$1.38	\$4.13	\$2.73	\$2.93
		3	<a href="#">1</a>	6	\$0.58	\$1.73	\$1.08	\$1.05
		5	<a href="#">2</a>	9	\$1.40	\$4.20	\$2.60	\$2.75
		6	<a href="#">1</a>	4	\$1.59	\$4.76	\$2.96	\$3.17
<b>17013.50 (SY)</b>	<b>21260.13 (SY)</b>	All Districts	<a href="#">1</a>	6	\$0.82	\$2.45	\$1.42	\$1.20
		3	<a href="#">1</a>	6	\$0.82	\$2.45	\$1.42	\$1.20
<b>21260.13 (SY)</b>	<b>25506.75 (SY)</b>	All Districts	<a href="#">3</a>	10	\$1.28	\$3.83	\$2.66	\$3.05
		2	<a href="#">1</a>	2	\$0.88	\$2.63	\$1.75	\$1.75
		4	<a href="#">1</a>	6	\$1.57	\$4.70	\$3.18	\$3.13
		6	<a href="#">1</a>	4	\$0.50	\$1.50	\$1.04	\$0.93
<b>29753.38 (SY)</b>	<b>34000.00 (SY)</b>	All Districts	<a href="#">2</a>	8	\$1.25	\$3.75	\$2.56	\$2.50
		4	<a href="#">1</a>	5	\$1.00	\$3.00	\$1.79	\$2.00
		5	<a href="#">1</a>	5	\$1.25	\$3.75	\$2.70	\$2.50

765.

Attachment D: Letters of Support

# TOWN OF SOUTHBOROUGH



## RECREATION DEPARTMENT

SOUTHBOROUGH RECREATION · 21 HIGHLAND ST. · SOUTHBOROUGH, MASSACHUSETTS 01772  
(508) 229-4452 · FAX (508) 229-7969  
WWW.SOUTHBOROUGHREC.COM

11/8/2023

Attn: Southborough Community Preservation Committee  
From: Tim Davis – Southborough Recreation Department

### **RE: Letter of Support – Trails Committee FY25 CPA Application**

Dear CPC Members,

At the November 6<sup>th</sup>, 2023 meeting of the Southborough Recreation Commission – a positive vote of 4-0-0 to support the CPA Application from the Southborough Trails Committee for FY25 funding was taken.

We thank Ms. McKee for her presentation, and the Trails Committee for their endless work on this project. The recreational benefits of this endeavor will be enjoyed by the residents of our town for years to come. We look forward to seeing this project complete and will continue to offer our full support and resources when called upon.

If you have any questions, please do not hesitate to reach out to me at the Recreation Department at 508-229-4452 x4002 or [TDavis@southboroughma.com](mailto:TDavis@southboroughma.com).

Respectfully Submitted,

Tim Davis, CPRP  
Recreation Director  
Southborough, MA

CC: Southborough Recreation Commission

# TOWN OF SOUTHBOROUGH



## PUBLIC ACCESSIBILITY COMMITTEE

TOWN HOUSE 17 COMMON STREET SOUTHBOROUGH, MASSACHUSETTS 01772-1662  
(508) 485-0710 • FAX (508) 983-7752 • selectmenoffice@southboroughma.com

December 21, 2023

Mr. Benjamin Smith  
Southborough Community Preservation Committee

**Subject: Letter of Support – Southborough Trails Committee Funding Request for the Peninsula Trail Construction Project**

Dear Mr. Smith:

The Southborough Public Accessibility Committee (SPAC) is pleased to write this letter of support for the Southborough Trails Committee's (STC) request to the Southborough Community Preservation Committee (CPC) for funding to complete Phase 2 of the Peninsula Trail Project that will help close the gap in the Boroughs Loop/Aqueduct Trail. By a unanimous vote, the SPAC fully supports the STC's funding request to pave two accessible parking spots and to complete approximately 75' of boardwalk and a 65' footbridge over Stony Brook that will all be engineered to be fully ADA compliant. Although the trail's proximity to the reservoir and the restrictions of the landscape on MWRA property will not allow the approaches to these new structures to be made fully ADA-compliant, the approaches will be made as fully accessible as possible. With the STC's focus on providing accessible trails where it is possible to do so, the SPAC anticipates that much of the eastern end of the new trail will become an important new recreational opportunity for all Southborough's residents regardless of mobility capabilities as the first 0.4-mile fully ADA compliant portion of the western end trail has already become.

Last Year, the SPAC unanimously supported the STC's successful application for the MassTrails Grant application, *Peninsula Trail Construction: Helping to Close the Boroughs Loop/Aqueduct Trail Gap*. Over the past year the SPAC has been very pleased with the energy and ingenuity of the STC to keep costs down and to find alternative sources of funding and pro-bono in-kind support. The SPAC is particularly happy with the consistent focus that the STC has brought to ensuring that as much of this new trail as accessible as possible for the benefit of all members of the Southborough community. The SPAC hope that other Town departments and committees will follow their example.

Sincerely,

p.p. William B. Warren, Secretary  
William Sines, Chairperson  
Southborough Public Accessibility Committee



# TOWN OF SOUTHBOROUGH



## Senior Center

9 Cordaville Rd. SOUTHBOROUGH, MASSACHUSETTS 01772  
Phone (508) – 229-4453 fax (508) – 229-1783

November 9, 2023

Community Preservation Committee

Ben Smith, Chair

Re: Letter of Support - Trails Committee Peninsula Trail Project FY25 CPA Application

Dear Mr. Smith,

The Southborough Council on Aging strongly encourages the Community Preservation Committee to approve the Peninsula Trail CPA application submitted by the Southborough Trails Committee to improve our recreational hiking opportunities and connectivity to our neighboring communities. The Southborough Trails Committee has made remarkable progress in improving the trails system in Southborough over the past several years. And we look forward to enjoying the trails proposed in this application. The council voted to support the CPA application at its November 3, 2023 meeting.

Local, outdoor activities are becoming more and more important to the seniors in our community. The last few years have been extremely difficult for many seniors. Isolation and the anxiety of indoor gatherings have had a significant impact on both their physical as well as mental health. Seniors over 60 are one of the fastest growing segments of our population and accessible trails reflect our commitment to providing 'age friendly' activities to all of the population.

The Southborough Council on Aging sincerely hope that you will approve the grant submitted by the Southborough Trails Committee. It is an important piece to improving the trail systems in Southborough.

Sincerely,

Douglas Peck, CDP  
Chairperson  
Southborough Council on Aging

Attachment E: Guidance on Proposed Peninsula Accessible Trail and Related Amenities

# Southborough, Massachusetts

---

## Guidance on Proposed Peninsula Accessible Trail and Related Amenities

August 2023



**Prepared by:**

***James M. Mazik, AICP - Consulting Services  
188 Lower Westfield Road Holyoke, MA 01040***

***and***

***Center for Living & Working, Inc.  
Michael Kennedy, ADA Access & Advocacy Coordinator  
18 Chestnut Street – Suite 540, Worcester, MA 01608***

## **GUIDANCE ON PROPOSED PENINSULA ACCESSIBLE TRAIL AND RELATED AMENITIES**

### **Background**

The Town of Southborough, through the Southborough Trails Committee (“Committee” hereafter), has requested guidance on a segment of the proposed Peninsula Trail (a.k.a. BLT/Aqueduct Trail) relative to accessibility compliance and related amenities. The Committee has engaged the services of the Center for Living & Working, Inc. (CLW) and James M. Mazik, AICP Consulting Services (JMM) for this effort. Recommended actions from CLW/JMM will adhere to both the requirements of the 2010 ADA Standards for Accessible Design and Title 521 of the Code of Massachusetts Regulations.

### **Description of Trail Segment**

The proposed Peninsula Trail will consist of accessible parking, a roughly 1,850 foot paved roadway segment with clear widths in excess of 12 feet, running slopes of 5.0% or less, and cross slopes of 2.0% or less. The proposed accessible trail will terminate at the point where the running slopes exceed 5.0% and vary up to 11.6% for a distance for approximately 80 feet. There is a level paved area beyond the steeper approach which continues to an unimproved dirt and gravel trail.

### **Existing Conditions**

**Parking.** The existing parking is not accessible compliant as the ground surface is not stable, firm, and slip resistant nor is it a uniform and smooth surface. The parking lacks signage and there is no clear delineation of parking spaces and access aisles (ie. striping).

**Accessible Route of Travel.** The roughly 1,850 feet of existing paved route of travel from the parking area to the point where the trail begins to ascend has compliant running and cross slopes for an accessible route of travel. There does not exist an accessible route of travel from the proposed accessible parking to the existing paved way.

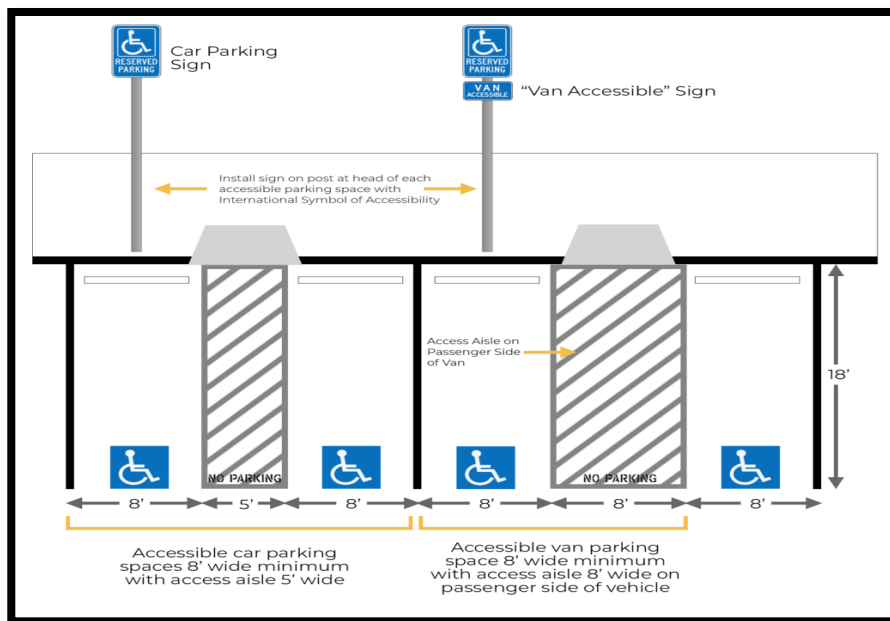
### **Components of Outdoor Accessible Facilities**

Most outdoor accessible facilities involve 3 basic components. This includes accessible parking, an accessible route of travel from the parking to the site amenity, and the amenity itself. If a facility has a restroom or a portable toilet, then those must also be on an accessible route of travel and must be fully accessible.

### **Parking Requirements**

At least one van accessible parking space with van accessible signage at a width of either 11’ with a 5’ access aisle or 8’ with and 8’ access aisle (2010 ADA Standards) should be provided. If an accessible passenger vehicle space is added, the space must be 8’ wide with a separate or shared 5’ wide access aisle. The accessible spaces and access aisles should be clearly delineated and striped. Signage must be set such that the signage height should be a minimum of 60” high at the bottom of the sign (2010 ADAAG Standards) and a maximum of 96” at the top of the sign (MAAB 521 CMR) and located no more than 10’ in front of the spaces. The slopes should not exceed 2% in any direction.

Surface materials for the parking and access aisle must be level (no more than 2.0% in any direction) and be a uniform, paved, or hard packed smooth surface. The surface must also be stable, firm, and slip resistant. Surface materials may include asphalt, concrete, compacted stone dust or similar materials. Cost and on-going maintenance will vary according to the material used.



### **Accessible Route of Travel Requirements**

An accessible route of travel needs to be provided to all areas available to the public. The accessible route must be firm, stable, and slip resistant and be compliant with width (48" wide with a minimum of 36" of clear width) and slope (2% maximum cross slope, 5% maximum running slope) requirements to each of these areas, including the raised garden beds. The accessible route should have no greater than a ¼" change in level surface or between ¼" and ½" if beveled with a slope of no more than 1:2. If the accessible route is more than 200' long and less than 5' wide, then a 5' by 5' passing space is required every 200'. In addition, nothing should protrude more than 4" into the accessible route between a height of 27" and 80" above the ground level.

Typical surface treatments include asphalt, concrete, stone dust, and stabilized stone dust (stone dust blended with a binding agent or polymer). A new product for use in recreation areas involves compacted shredded bark/wood chips mixed with a polymer stabilizing adhesive product.

Below is information on surface types including estimated cost per square foot, pros, cons, and representative photos of each.

### **Asphalt**



- Pros:
- 1) Durable
  - 2) Relatively inexpensive
  - 3) Requires little maintenance
  - 4) Does not readily deteriorate and has a longer live span

- Cons:
- 1) Is not permeable
  - 2) Subject to heaving and grass/weed infiltration in cracks
  - 3) Added cost due to site preparation requirements
  - 4) Requires periodic crack-filling and re-sealing/re-coating

Estimated cost per square foot (2022): Up to \$10.00

### Concrete



- Pros:
- 1) Durable
  - 2) Requires little maintenance
  - 3) Does not readily deteriorate and has a longer live span

- Cons:
- 1) Is not permeable
  - 2) Subject to cracking, edge deterioration, and some heaving
  - 3) Is more expensive due to site preparation and construction
  - 4) Requires more expensive repair varying from grinding to complete concrete pad replacement

Estimated cost per square foot (2022): Up to \$25.00.

## Stone Dust



- Pros:
- 1) Inexpensive and can be installed by municipal work force
  - 2) Permeable

- Cons:
- 1) Requires regular maintenance including the addition of material, compaction, re-grading, and weed removal
  - 2) Subject to deterioration and wash-outs especially on sloped areas
  - 3) If not installed properly and/or regularly maintained, can be problematic for wheelchair users as well as those with arm crutches due to degradation of the surface stability and firmness

Estimated cost per square foot (2022): Up to \$5.00.

## Stabilized Stone Dust



- Pros:
- 1) Relatively inexpensive
  - 2) Permeable
  - 3) More durable than regular stone dust
  - 4) Doesn't heave, weed resistant

- Cons:
- 1) Costs more than regular stone dust
  - 2) Requires metal or wood edging to preserve the integrity of the walkway and limit side erosion
  - 3) May require periodic touch up and restoration

Estimated cost per square foot (2022): \$7.00 to \$10.00.

## Compacted Wood Chips/Bark Mixed with an Emulsion



- Pros:
- 1) Relatively inexpensive
  - 2) Permeable
  - 3) More durable than regular stone dust
  - 4) Doesn't heave, weed resistant
  - 5) Works on sloping surfaces

- Cons:
- 1) Costs more than regular stone dust
  - 2) Requires metal or wood edging to preserve the integrity of the walkway and limit side erosion
  - 3) May require periodic touch up and restoration

Estimated cost per square foot (2022): \$7.00 to \$10.00.

### **Recommendations**

1. Construct compliant accessible parking spaces at the start of the accessible trail (roadway). This should include one van accessible parking space and one passenger vehicle accessible parking space.
2. Construct a compliant accessible route of travel from the accessible parking spaces to the paved roadway.
3. Provide at least one bench along the roadway, preferably at the end of the accessible route of travel before the running slope exceeds 5.0%. There should be a level area (2.0% or less slopes in any direction) for a wheelchair adjacent to the bench. The level area should be 36" wide x 60" deep per wheelchair. If a front/rear approach, the depth can be reduced to 48" as opposed to 60" for a side approach.
4. Consideration should be given to installing interpretive signage at the end of the accessible portion of the roadway with examples of the water views at the top of the slope and non-accessible area. This can include visuals from the different seasons and information about the Sudbury Reservoir and the surrounding area. The sign would allow those with mobility limiting disabilities to "view" a portion of the reservoir and its flora and fauna. The sign should also be in Braille for visually impaired visitors. [See Photo A: Sample Interpretive Sign.](#)
5. Consideration should be given to installing guides along the edge of the roadway for those who are sight impaired. Informational signage with Braille could also be provided at various locations. [See Photos B and C: Sample Guide and Informational Signage.](#)
6. Consideration should also be given to provide the following signage:
  - a) Signage at the accessible parking describing the length of the trail, running slope, and amenities.
  - b) Signage at the accessible parking requiring that it is a "carry in – carry out" site.



- c) Signage at the end of the accessible portion noting the remainder of the paved roadway has running slopes of up to 11.6% for a distance of roughly 80 feet and that access is at one's own risk.



Photo A: Sample Interpretive Sign

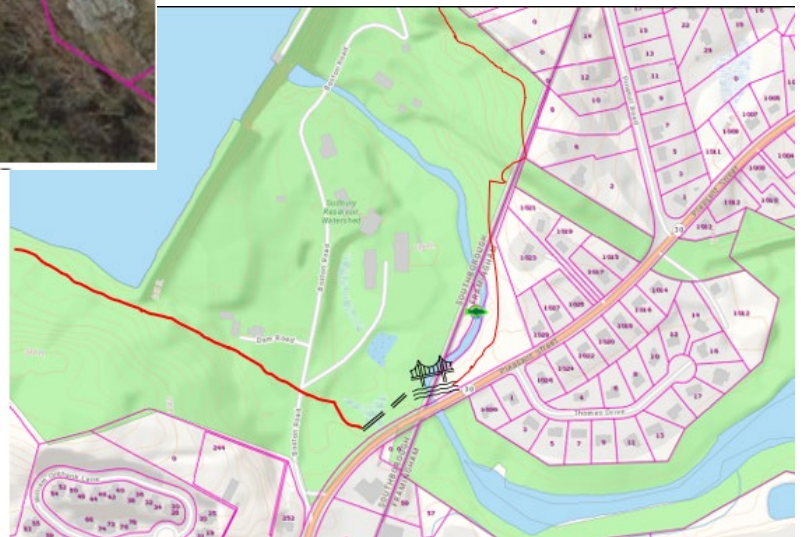


Photo B: Sample Guide



Photo C: Sample Informational Signage

# Project Location and Pictures



Proposed Footbridge Location (Southborough/Framingham)



Boardwalk location (Southborough)



Prefabricated Bridge/Boardwalk Examples

