

A 3D rendered hand holding a magnifying glass, with the lens focused on the text. The hand and magnifying glass are rendered in a light orange color, matching the background. The magnifying glass is held in a way that the lens is positioned over the text, emphasizing it.

**Southborough HAS
great schools!**

Teachers, Counselors, Administrators, and Parents

#10

**Albert S. Woodward
Memorial School**

#13

**Margaret A Neary
Elementary School**

out of 957
according to U.S. News & World Report





What do we need?

great schools

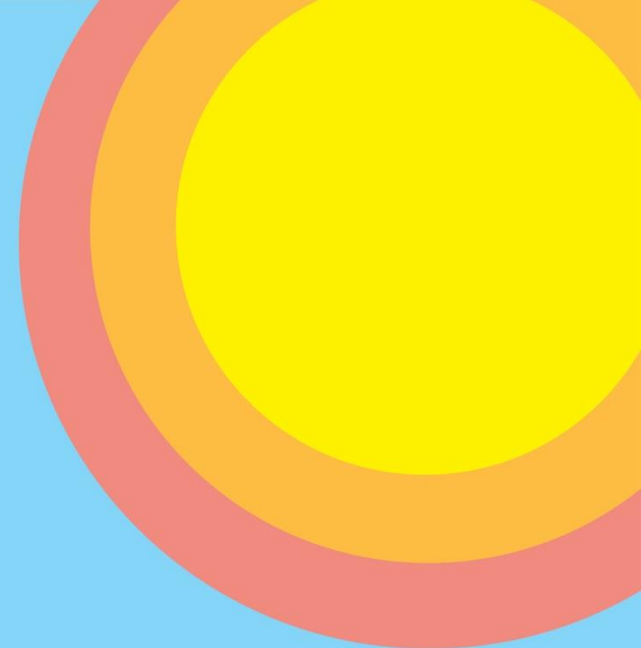
AND

fiscal
responsibility

Let's think creatively and make use of what we already have!

It is not needed We have enough space

The proposed new school is 99,564 sf –
30% smaller than Trottier



Mary Finn
76,000 sq ft



Woodward
68,000 sq ft



Trottier
130,000 sq ft



It is not fiscally responsible

- FY26 tax increase = 7.92% FY27 (projected) tax increase = 13.16%
- Plus more for a new school!
- Actual building costs, tariffs, gov't grant/reimbursement changes?
- \$\$\$ to convert Finn, convert Woodward for younger grades?

Remember, you are
voting to approve
the ENTIRE
\$108.5 million



Environmental risk

Nearly capped not encapsulated landfill

- Proximity
- Testing

LANDFILL



Here's an example of how we could redistribute grades

Class sizes remain at maximum 18 students per class

Mary Finn

Grades PreK, K, 1 and 2

Northboro Pre K is leaving

Keeps one school on the south side of town



Woodward

Grades 3, 4

No renovations

Domino Effect



Trottier

Grades 5, 6, 7, 8

Upper & Lower School

Four of the top ten middle schools in Massachusetts include grades 5-8





High caliber quality education

Maximize our existing assets

Sustainable, affordable future for all residents

Please VOTE NO

